

## Survey Results - Week Commencing 8th June 2020

- \* Results are based on a sample of LAs taken in the W/C 8th June 2020. The sample size varies each week and these results should be used as a general indication of levels and trends.
- \* Responses represent best reasonable estimates at the date and time the survey is completed, and for some Local Authorities (LAs), may be reported with a week's lag.
- \* Although this document is not in itself an official statistics release, it and the indicators within it, have undergone a proportionate level of quality assurance.
- \* Percentages throughout this document may not sum to totals due to rounding

## Collection Services



\*Axis dates given as 'week commencing...'

- **Residual waste:** The vast majority (**83%**) of Waste Collection Authorities/Unitary Authorities (WCAs/UAs) responding to our survey in the W/C 8<sup>th</sup> June 2020 and who provide residual waste collections, report these to be operating as normal. This is

nevertheless a reduction from previous weeks. Most of the remainder reported experiencing minor disruption.

- **Recycling:** Seven in ten (**70%**) recycling collections are reported to be operating as normal in the W/C 8<sup>th</sup> June, while minor disruption is reported by **27%** of responding authorities.
- **Food waste:** Five in six (**84%**) LAs responding to our survey in the W/C 8<sup>th</sup> June who provide food waste collections, report these to be operating as normal. **16%** of responding authorities continue to report some level of disruption.
- **Garden waste:** Almost three quarters (**72%**) of garden waste collection services are reported to be operating as normal in the W/C 8<sup>th</sup> June, with this figure slightly lower than the W/C 1<sup>st</sup> June. A further **19%** report garden waste collection services to have minor disruptions.
- **Clinical waste:** Almost all (**97%**) clinical waste collections (generally ran in over three quarters of LAs represented in this survey) are reported to be continuing to operate as normal.
- **Commercial waste:** **55%** of LAs responding to our survey in the W/C 8<sup>th</sup> June report commercial collection services to be operating normally, a decrease on previous weeks, with another **14%** reporting operating with minor disruption. The rest of LAs responding in W/C 8<sup>th</sup> June are operating with moderate disruption.
- **Bulky collections:** The overall situation for bulky collections has improved incrementally since the end of March. **6%** of bulky collections are reported to be unavailable in the W/C 8<sup>th</sup> June, similar to the results in W/C 1<sup>st</sup> June. The percentage of collections reported to be operating normally is **63%** in the W/C 8<sup>th</sup> June.
- **Street sweepings:** Roughly three in four (**76%**) street-sweeping and litter collection services provided by responding LAs are reported to be operating normally. **19%** are reported to be experiencing minor disruption.
- **66%** of **bring banks** are reported to be operating normally in the W/C 8<sup>th</sup> June by responding LAs. **16%** report this service to be experiencing minor disruption and **9%**, moderate disruption. **3%** report this service to be not available.
- The vast majority (**88%**) of **fly-tipping clearance** collections are reported to be operating as normal in the W/C 8<sup>th</sup> June. **7%** are reported to be in operation but with minor disruption.

	<b>Operating normally</b>	<b>Minor disruption</b>	<b>Moderate disruption</b>	<b>Severe disruption</b>	<b>Service not available</b>
<b>Residual</b>	83%	17%	1%	0%	0%

<b>Recycling</b>	70%	27%	2%	0%	1%
<b>Food</b>	84%	14%	1%	0%	1%
<b>Garden</b>	72%	19%	5%	0%	3%
<b>Clinical</b>	97%	2%	0%	0%	1%
<b>Commercial</b>	55%	14%	31%	0%	0%
<b>Bulky</b>	63%	22%	9%	0%	6%
<b>Bring Banks</b>	66%	16%	9%	6%	3%
<b>Fly-Tip Clearance</b>	88%	7%	4%	0%	0%
<b>Street Sweeping</b>	76%	19%	4%	1%	0%

# Disposal Services

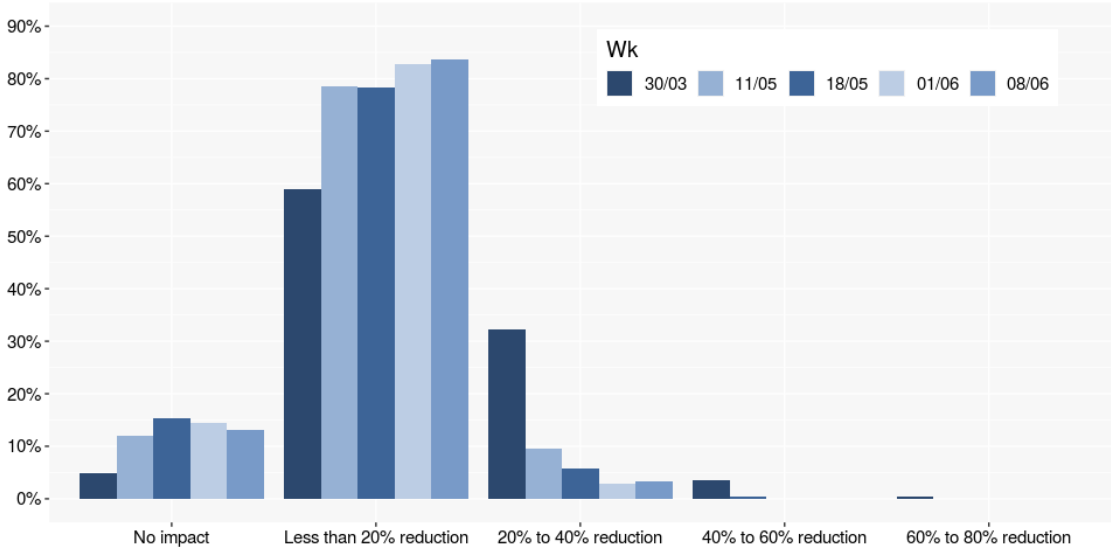


- Nearly all landfilling and Energy from Waste (EfW) disposal services utilised by LAs responding to our survey are reported to be operating as normal in the W/C 8<sup>th</sup> June 2020. This has been a relatively constant picture since the W/C 30<sup>th</sup> March.
- **Material Recycling Facilities (MRFs):** Greater levels of disruption have been consistently reported for recycling disposal services than residual by survey respondents, and this trend continues to be the case in the W/C 8<sup>th</sup> June. Just slightly more than four in five (**82%**) MRF services used by LAs responding to our survey are reported to be operating as normal, while **14%** are reported to be operating but with minor disruption.
- **Transfer stations:** As in previous weeks, most transfer stations (**93%**) are reported to be continuing to operate without any disruption by LAs responding to our survey in the W/C 8<sup>th</sup> June.
- **Household Waste Recycling Centres (HWRCs):** In the W/C 8<sup>th</sup> June, around four in five (**81%**) responding LAs report minor or moderate levels of disruption among HWRCs that are in operation.

- **Mechanical Biological Treatment (MBT):** MBT services are reported to in normal operation for almost all (**94%**) of the relatively small proportion of responding authorities where this is a disposal service (just under a quarter). The remainder report experiencing minor disruption.
- **Open Windrow Composting (OWC):** OWC services are reported to be operating as normal by **96%** of responding LAs this week.
- The majority of (**96%**) **In-Vessel Composting (IVC)** and **Anaerobic Digestion (AD)** services are reported to be operating as normal by LAs responding to our survey in the W/C 8<sup>th</sup> June.

	<b>Operating normally</b>	<b>Minor disruption</b>	<b>Moderate disruption</b>	<b>Severe disruption</b>	<b>Service not available</b>
<b>Landfill</b>	100%	0%	0%	0%	0%
<b>EFW</b>	96%	4%	0%	0%	0%
<b>MRF</b>	82%	14%	4%	0%	0%
<b>HWRC</b>	19%	40%	41%	1%	1%
<b>Transfer Stations</b>	93%	6%	1%	0%	0%
<b>MBT</b>	94%	6%	0%	0%	0%
<b>OWC</b>	96%	2%	2%	0%	0%
<b>IVC/AD</b>	96%	4%	0%	0%	0%

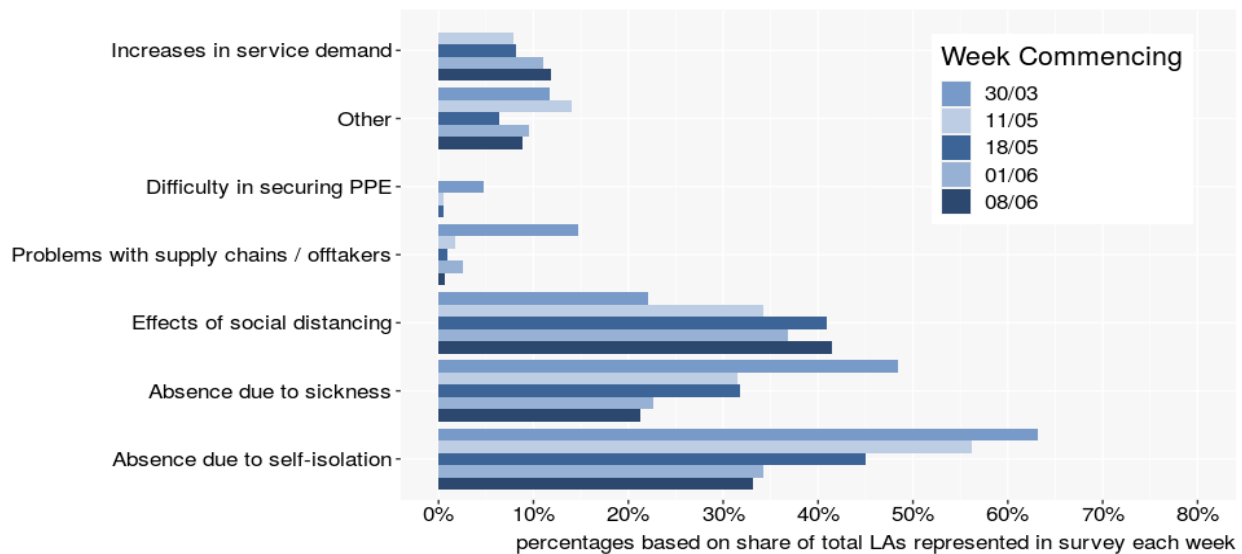
# Staff Absence Levels



- In the W/C 8<sup>th</sup> June 2020, **13%** of LAs reported experiencing 'no impact' on operational staffing levels. This figure is three times greater than that reported in the W/C 30<sup>th</sup> March, though slightly less than in the last survey (W/C 1<sup>st</sup> June)
- **84%** of LAs reported a 'less than 20% reduction' on staffing levels, a little bit higher level to the week before.
- **3%** of LAs reported a '20-40% reduction' on staffing levels and no LAs reported a greater than '20-40% reduction' in the W/C 8<sup>th</sup> June. Instances of the worst levels of disruption for staffing levels have continued to fall since the W/C 30<sup>th</sup> March.

# Reasons for Service Changes

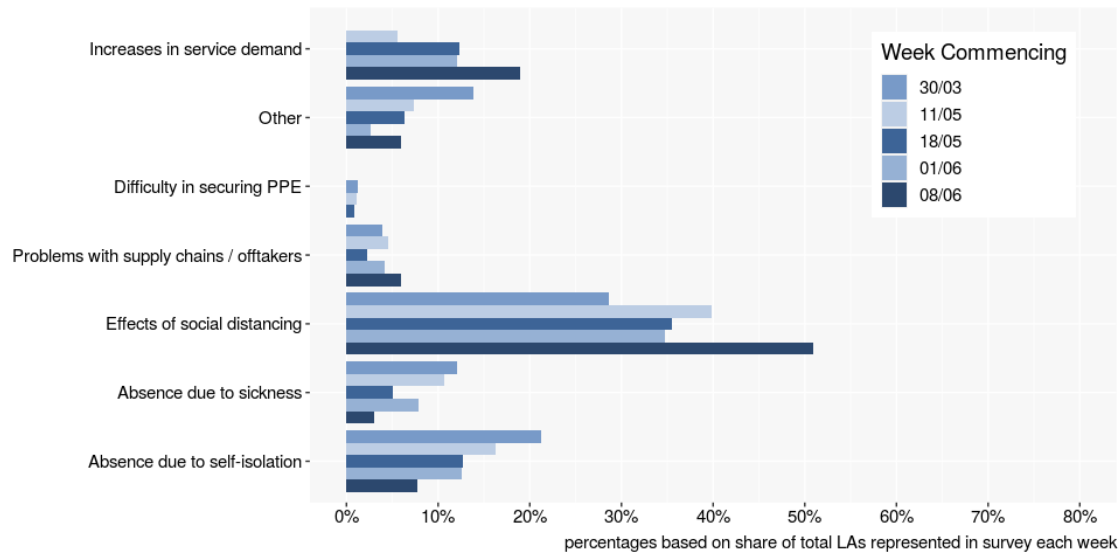
## Collection



Percentages may sum to greater than 100%, as responding LAs can state more than one reason

- In the W/C 8th June, the greatest reported cause for disruption to collection services by responding LAs, where this is arising, is the **effects of social distancing**, highlighted by **41%** of LAs. This was followed by **absence due to self-isolation** as the second greatest reported cause for disruption, which was identified by **33%** of responding LAs in the W/C 8<sup>th</sup> June.
- **Absence due to sickness** is reported to be a cause for disruption to collection services by **21%** of LAs, a similar percentage to our previous week's survey.
- As in the two weeks prior, roughly one in eight (**12%**) LAs responding to our survey in the W/C 8<sup>th</sup> June continue to highlight **major increases in demand for services** as a cause for disruption to collection services.
- **Problems with offtakers** were identified by **1%** of LAs as a cause for disruption, with this figure having fallen incrementally each week. For those experiencing problems with offtakers, the material stream impacted is reported to be co-mingled waste (cans/plastics/fibre/glass). The sole reason reported for this issue was limitations on volumes of waste being accepted by offtakers, with this causing LAs to be unable to place '25% - 50% of materials'.
- **'Other reasons'** for disruption were highlighted by **9%** of LAs. These include certain services not being fully functional, and changes in collection services recently implemented.

## Disposal



Percentages may sum to greater than 100%, as responding LAs can state more than one reason

- The **effects of social distancing** continue to be the greatest reported cause of disruption to disposal services among responding LAs, reported by **51%** in the W/C 8<sup>th</sup> June.
- **Major increases in service demand**, the next greatest reported reason, has been highlighted by **19%** of responding LAs as a cause for disruption. This figure is almost three times greater than when it was first reported in the W/C 27<sup>th</sup> April.
- **Staff absences due to self-isolation** is the third highest reported cause of disruption to disposal services, reported by **8%** of responding LAs in the W/C 8<sup>th</sup> June.
- **Problems with supply chains/offtakers** were highlighted by **6%** of respondents in the W/C 8<sup>th</sup> June. For those experiencing supply chain problems at the disposal stage, the waste stream impacted is co-mingled materials (cans/plastics/fibre and glass). The main reason reported for this issue was limitations on volumes of waste being accepted, with LAs mainly being unable to place 'under 15% of materials'. Difficulty in meeting input quality specifications was also mentioned as a reason this week.
- **Other reasons** were highlighted by **6%** of LAs.
- **Staff absences due to sickness** has been highlighted by **3%** of responding LAs as a cause for disruption.



## Changes in Waste Arisings

### (Excluding Withdrawn Services)

	+100% increase	50-100% increase	20-50% increase	0-20% increase	No impact	0-20% decrease	20-50% decrease	50-100% decrease
Residual	1%	3%	22%	58%	13%	1%	0%	1%
Recycling	2%	5%	35%	47%	10%	1%	0%	1%
Food	1%	6%	18%	39%	21%	14%	0%	1%
Garden	3%	10%	25%	32%	17%	12%	1%	0%
Clinical	0%	0%	0%	8%	90%	2%	1%	0%
Commercial Waste	0%	0%	1%	0%	7%	35%	29%	28%
Bulky	1%	1%	10%	22%	40%	22%	3%	0%
Bring Banks	2%	5%	16%	29%	30%	3%	3%	11%
Fly-Tip Clearance	1%	3%	10%	46%	33%	3%	1%	3%
Street Sweepings/ Litter	1%	0%	8%	13%	48%	22%	7%	2%
HWRCs	0%	3%	6%	14%	25%	20%	22%	11%

- **Residual:** **84%** of LAs represented in our survey in the W/C 8<sup>th</sup> June continue to report higher than usual residual waste arisings. **58%** reported increases to be in the region of '0-20% greater than normal', **22%** reported increases to be in the region of '20-50% greater than usual', **3%** reported waste arising levels to be '50-100%' greater than usual, and **1%** reported increases of over 100%.
- **Recycling:** The vast majority (**89%**) of LAs responding to our survey in the W/C 8<sup>th</sup> June reported recycling waste arisings to be greater than usual, with around half of those LAs reporting increases to be in the region of '0-20%'.
- Higher than usual arisings of collected **food** and **garden waste** are reported by **64%** and **70%** of LAs, respectively. Over a fifth (**21%**) report arisings to be about the same for food waste stream, whereas **17%** report that for garden waste
- **Two fifths (40%)** of LAs report **bulky waste** collection tonnages to be 'about the same' this week, with **34%** reporting collected tonnages to be greater than usual, while **25%** report less than usual collected tonnages.

- **The vast majority (90%)** of LAs continue to report collected **clinical waste** arisings to be at a similar level to what is typical.
- Over half of authorities (**52%**) reported a greater than usual level of collected waste from **bring banks**.
- **Fly-tip clearance:** Three in five responding LAs (**60%**) report greater than usual volumes of collected fly-tipped waste, similar to one week prior (58%). **46%** report increases to be in the region of '0-20%' and **10%** '20-50%'. Roughly a third (**33%**) of respondents reported collected tonnages were as typical.
- **Commercial:** **92%** of respondents highlighted a reduction in collected commercial waste arisings relative to usual. This is a larger percentage than the previous week.
- **Street sweepings/Litter:** Almost half of respondents (**48%**) report arisings to be at a similar level to what is typical, with another 31% reporting tonnages being lower than normal, with a '0 – 20%' decrease being the largest percentage decrease.
- **HWRCs:** One in four responding LAs (**25%**) report collected tonnages at their HWRCs to be typical. Around a half of responding LAs (**53%**) report a reduction in collected tonnages, with a '20-50%' reduction being the largest reduction reported.